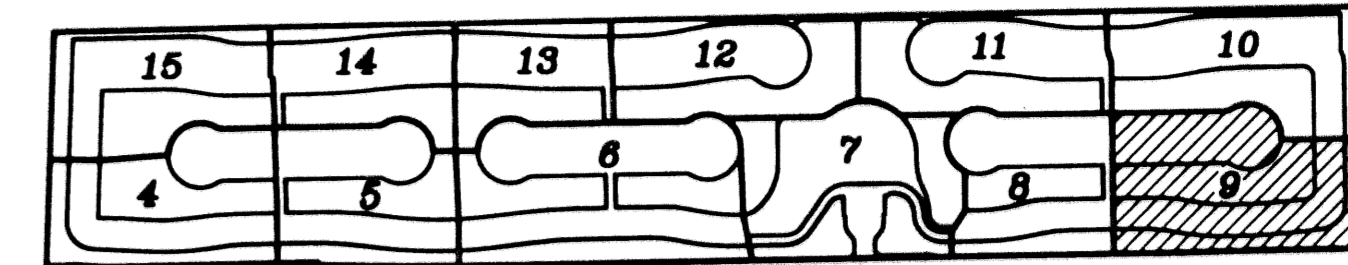
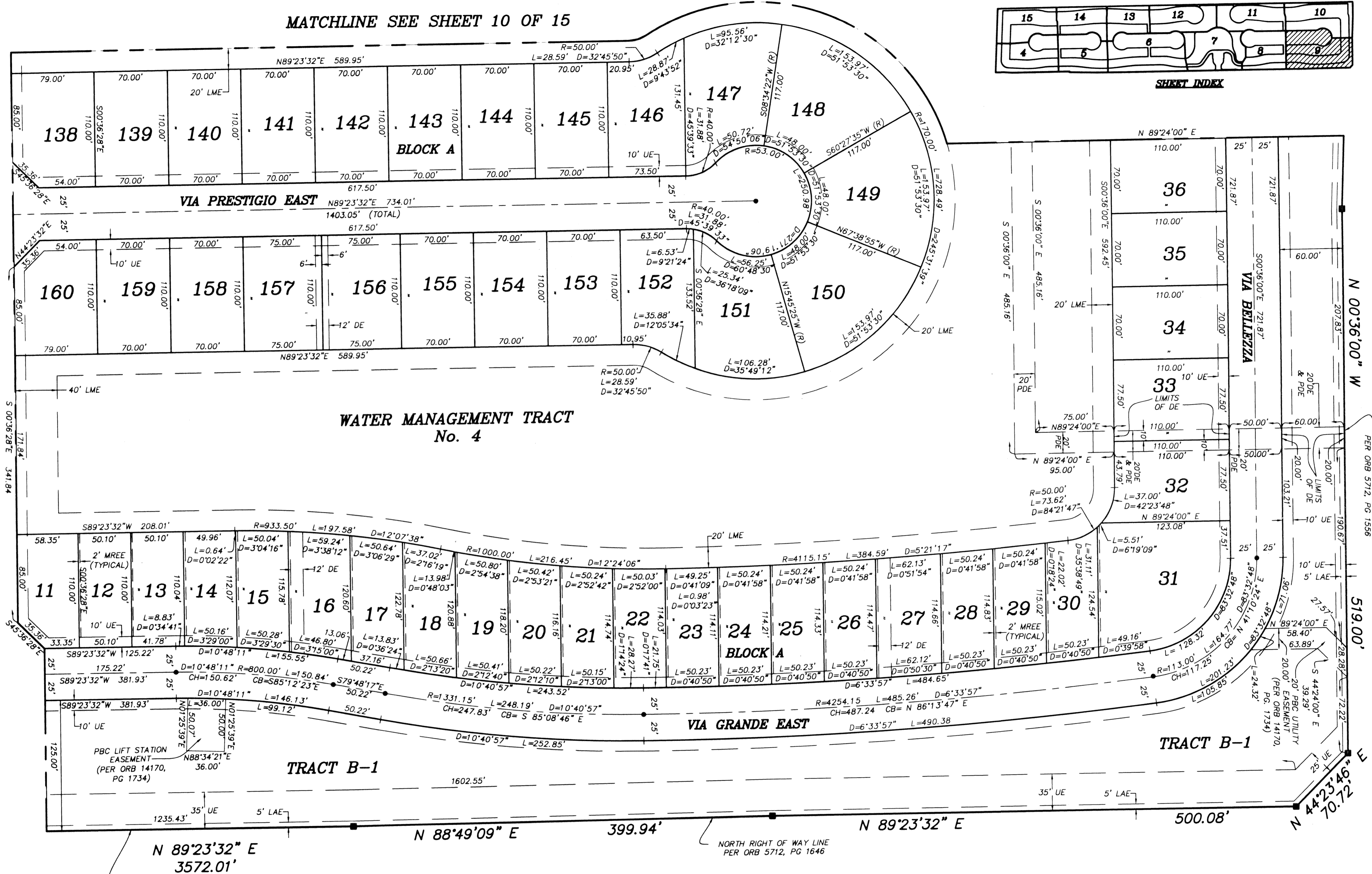


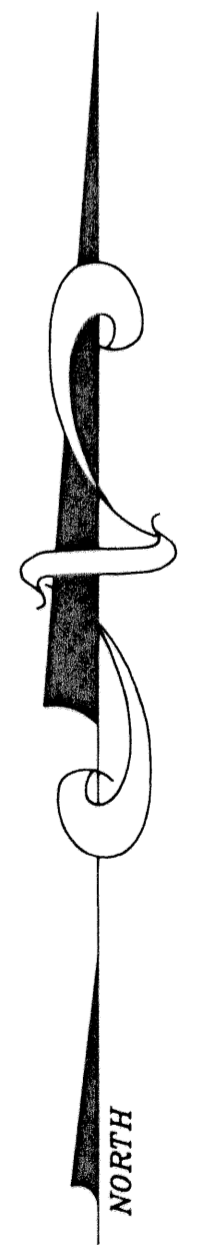
MATCHLINE SEE SHEET 10 OF 15



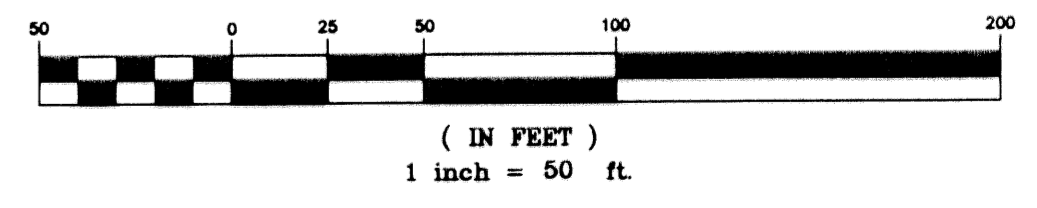
MATCHLINE SEE SHEET 8 OF 15



LYONS ROAD (WIDTH VARIES)



GRAPHIC SCALE



- LEGEND:**
- D= DELTA (CENTRAL ANGLE)
  - L= LENGTH
  - R= RADIUS
  - PB= PLAT BOOK
  - O.R.B.= OFFICIAL RECORD BOOK
  - PG= PAGE
  - = PERMANENT REFERENCE MONUMENT "LB 4318" (UNLESS OTHERWISE NOTED)
  - = PERMANENT CONTROL POINT "LB 4318"
  - (R)= RADIAL
  - UE= UTILITY EASEMENT
  - DE= DRAINAGE EASEMENT
  - MREE= MAINTENANCE & ROOF EAVE EASEMENT
  - LAE= LIMITED ACCESS EASEMENT
  - WME= WATER MANAGEMENT TRACT
  - PLS= PROFESSIONAL LAND SURVEYOR
  - PSM= PROFESSIONAL SURVEYOR & MAPPER
  - LB= LICENSED SURVEYING & MAPPING BUSINESS
  - CH= CHORD DISTANCE
  - CB= CHORD BEARING
  - LWDD= LAKE WORTH DRAINAGE DISTRICT
  - PBC= PALM BEACH COUNTY
  - PDE= PUBLIC DRAINAGE EASEMENT

**BUENA VIDA**  
 BEING A REPLAT OF A PORTION OF BLOCKS 16 AND 17 OF PALM BEACH FARMS COMPANY  
 PLAT No. 3, AS RECORDED IN PLAT BOOK 2, PAGES 45 THROUGH 54 OF THE PUBLIC  
 RECORDS OF PALM BEACH COUNTY, FLORIDA, IN PART OF SECTIONS 7 AND 8, TOWNSHIP  
 44 SOUTH, RANGE 42 EAST, VILLAGE OF WELLINGTON, PALM BEACH COUNTY, FLORIDA.  
 SHEET 9 OF 15  
 MARCH 2002

	<b>BUENA VIDA</b>	
	<b>NICK MILLER, INC.</b> Surveying & Mapping Consultants	
SHEET NO. <b>9</b>	SCALE: 1" = 50'	DATE: MARCH 2002
		JOB NO. 1008.009
		FILE: 1008.09